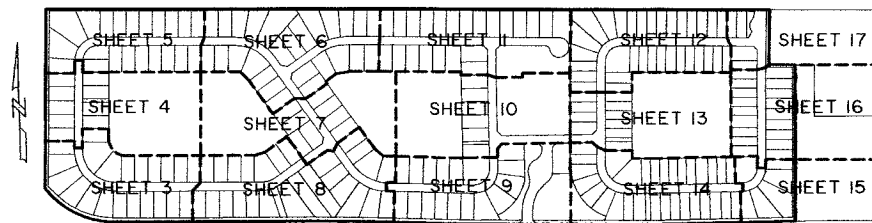


36



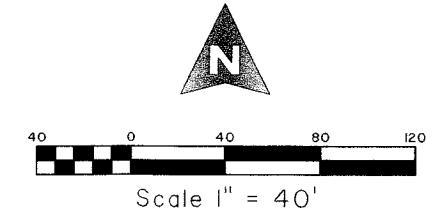
KEY MAP
NOT TO SCALE

CASTELLINA

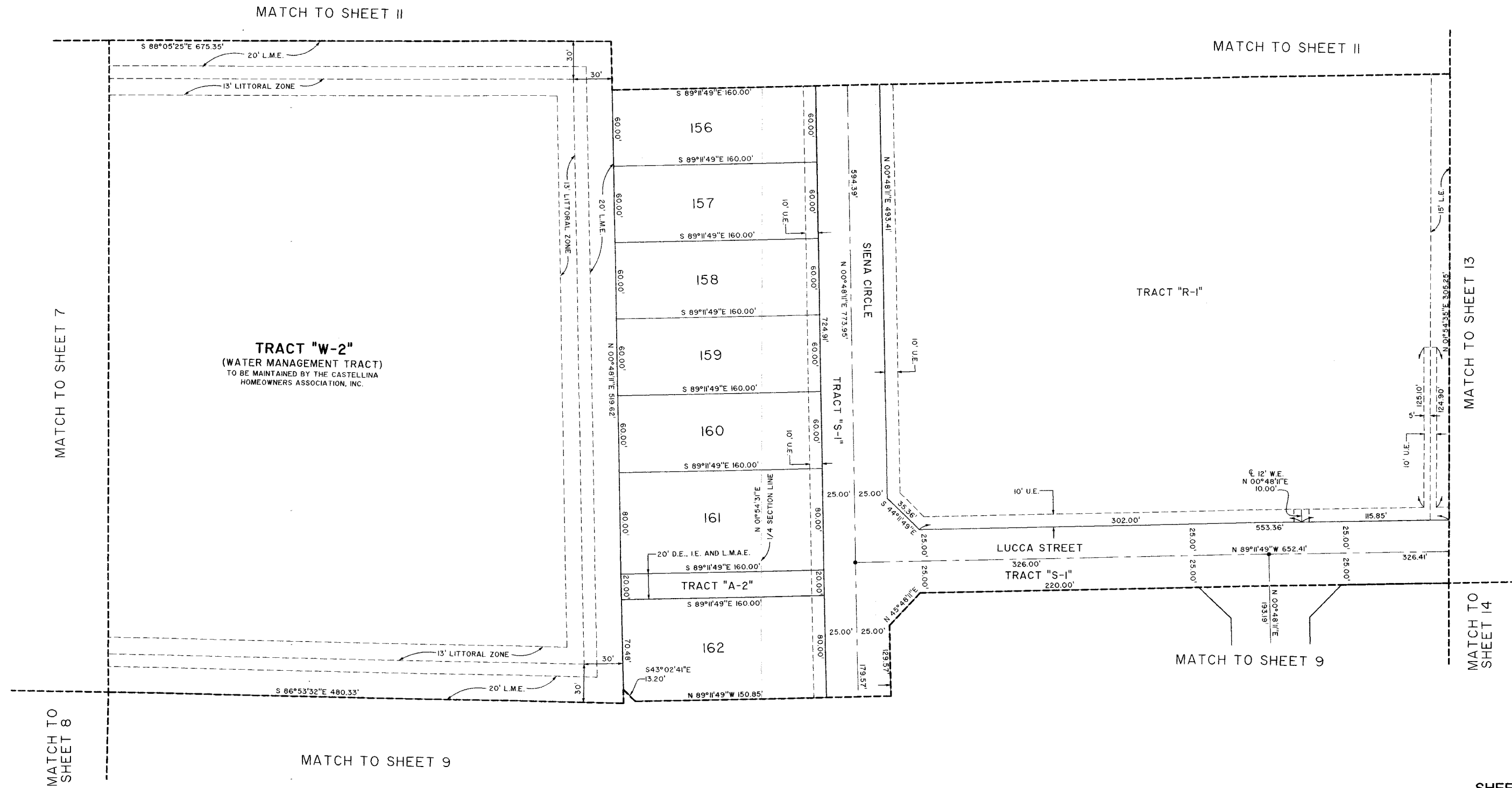
LYING IN SECTION 13, TOWNSHIP 44 SOUTH, RANGE 41 EAST, VILLAGE OF WELLINGTON,
PALM BEACH COUNTY, FLORIDA. BEING A REPLAT OF A PORTION OF LANIER PROPERTY AS
RECORDED IN PLAT BOOK 108, PAGES 75 THROUGH 91, PUBLIC RECORDS OF PALM BEACH
COUNTY, FLORIDA.

SHEET 10 OF 17

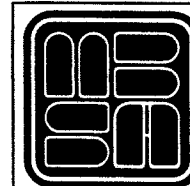
FEBRUARY, 2012



COUNTY OF PALM BEACH)
STATE OF FLORIDA) SS
THIS PLAT WAS FILED FOR RECORD
AT _____ M. THIS _____ 2012, AND
DULY RECORDED IN PLAT BOOK NO. _____
ON PAGE _____ THRU _____
SHARON R. BOCK,
CLERK AND COMPTROLLER
BY: _____, D.C.



SHEET 10 OF 17



MICHAEL B. SCHORAH & ASSOCIATES, INC.
1850 FOREST HILL BLVD., SUITE 206
WEST PALM BEACH, FLORIDA 33406
EB# 2438 TEL. (561) 968-0080 FAX. (561) 642-9726 LB# 2438

CASTELLINA

2:\Castellina\05012350_FLAT.dwg, 2/14/2012 11:33:37 AM, LCB